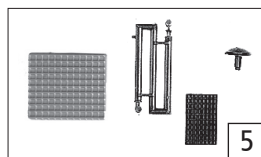
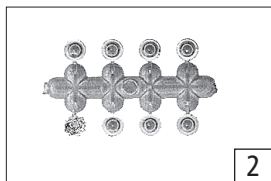
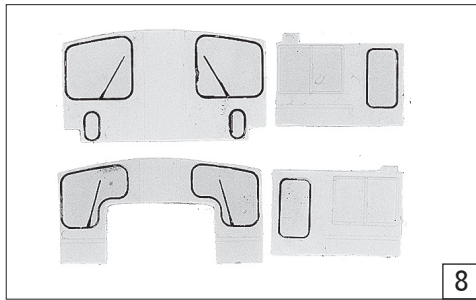
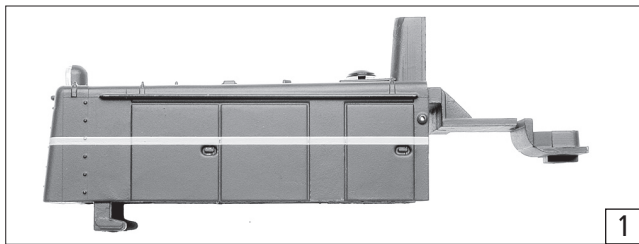
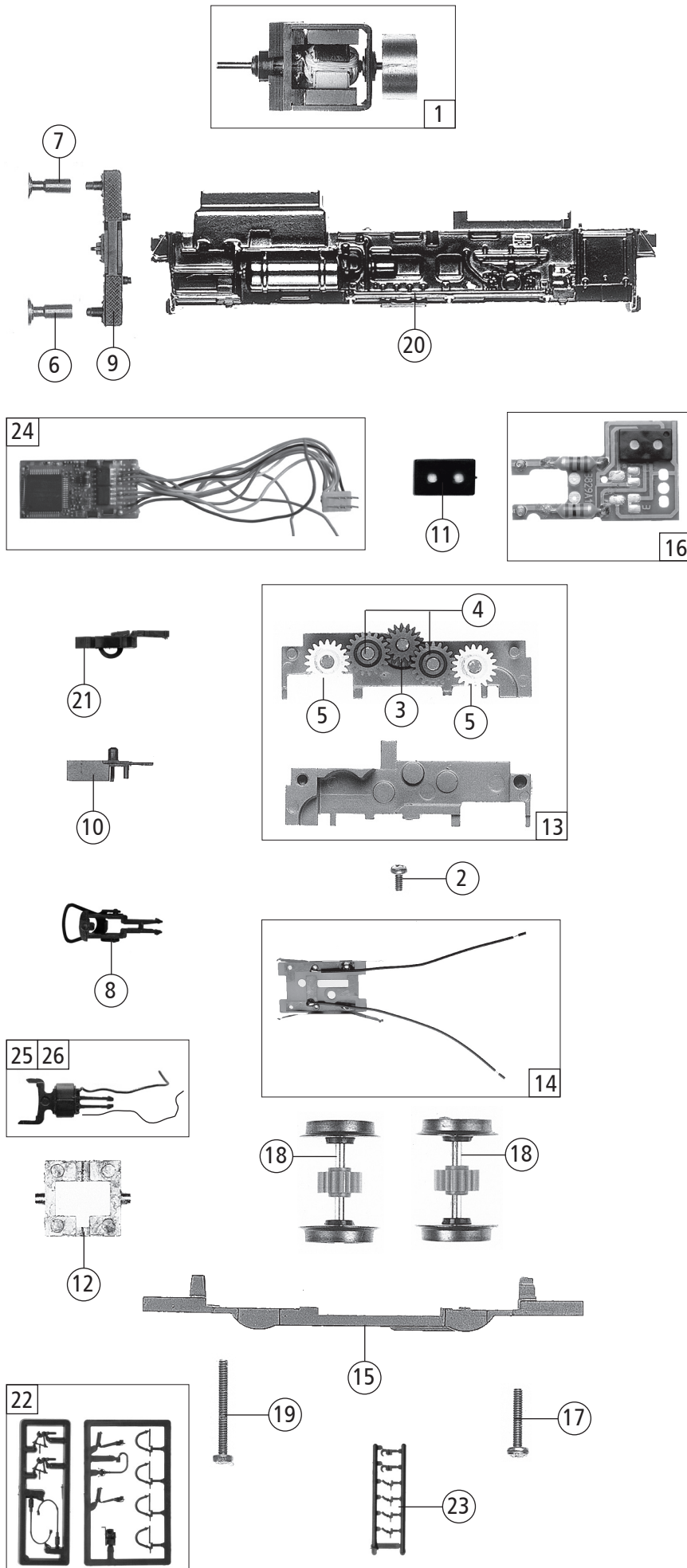


7 o. Abb. / no ill.  
TS - Griffe lack.  
Part set of handrails painted



Pos. Nr. Pos.no.	Beschreibung Description	Art.-Nr. Art.no.	Preisgruppe Price bracket
72726	DB BR 333	=	
72727		=	
1	Motorgehäuse komplett Betr. Nr. 333 057-8 Motorbody assembly loco no. 333 057-8	139218	17
2	TS - Reflektoren geprägt Part set reflectors printed	106524	8
3	Scheinwerfer Headlight set	139216	3
4	Rangierfunk Shunter aerial	106534	3
5	TS - Gehäuse Parts set body	139219	7
6	Sirene Signal horn	106526	3
7	TS - Griffe lack. Part set of handrails painted	139220	15
8	TS - Fenster Part set of window	120624	9
9	Führerhaus kpl. Betr. Nr. 333 057-8 Drivers cab assembly loco no. 333 057-8	139217	22



Pos. Nr. Pos.no.	Beschreibung Description	Art.-Nr. Art.no.	Preisgruppe Price bracket
1	Motor mit Schnecke Motor with worm gear	85108	28
2	Schraube M1,6X3 mm Screw M 1,6x3	85658	3
3	Zahnrad Z=19/14 M=0,4 Gear wheel z=19/14 M=0,4	86416	4
4	Zahnrad Z=19 M=0,4 Gear wheel z=19 M=0,4	86417	3
5	Zahnrad Z=19/12 M=0,4 mm Gear wheel z=19/12 M=0,4	86424	4
6	Puffer rund flach Buffer round flat	88556	5
7	Puffer rund gewölbt Buffer round curved	88557	5
8	Standardkupplung Standard coupling	89246	6
9	Pufferbohle Frontside framework	95448	5
10	Kupplungshalter Coupling holder	95449	4
11	Brückenstecker Connector	100644	6
12	Achswippe Axle rocker	106543	8
13	Getriebebesatz 2-tlg. ohne Zahnräder Gear set 2-parts w/o gear wheels	108949	16
14	Platine kpl. PCB assembly	108950	12
15	Getriebeboden Gear bottom	109392	13
16	Platine PCB	110783	12
17	GF-Schraube M2X10 mm Self-tapping screw M2x10	114854	3
18	Radsatz mit Zahnrad o. Haftring Wheelset with gear wheel w/o tract.tyre	115059	10
19	GF-Schraube M2X18 mm Self-tapping screw M2x18	115062	3
20	Rahmen lack. Frame painted	139215	19
21	Kurzkupplung-Vorentkupplung Short coupling- pre-uncoupling	115550	6
22	Zubehörrahmensatz Set of accessory frames	108322	7
23	Attrappenrahmen klein Small dummy frame	107808	4
<b>abweichende Teile für 72727</b>			
24	Decoder Mx630R Dig.Kupplung Decoder Mx630 R digital coupling	133800	39
25	Digital - Kupplung kpl. Digital - coupling complete	129677	18
26	Digital - Kupplung kpl. Digital - coupling complete	129678	18